

TRANSFORMADORES



TRANSFORMERS

Distribución



Distribution



TRANSFORMADORES

FOHAMA

ELECTROMECHANICA S.R.L.

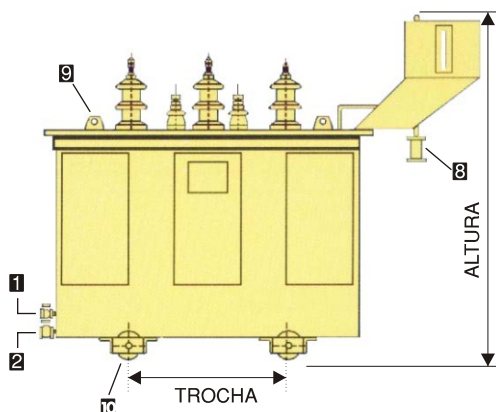


Avda. Larrazábal 2328 - C1440CVP - Ciudad de Buenos Aires - República Argentina
Tel: (54-11) 4682-5910 (rot.) - Fax: 4683-4107 - Ventas: 4635-8862
E-mail: transformadores@fohama.com.ar

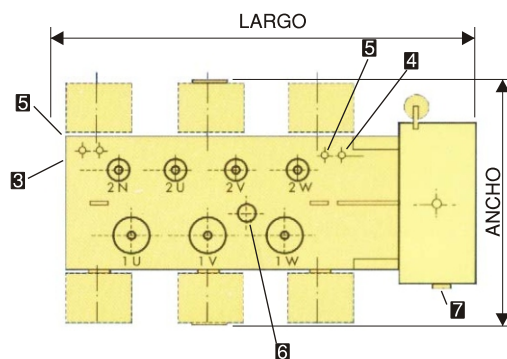
CARACTERISTICAS CONSTRUCTIVAS SEGUN NORMAS IRAM 2250

THE DESIGN CHARACTERISTICS MEET THE REQUIREMENTS OF IRAM 2250

VISTA LATERAL
LATERAL VIEW



VISTA SUPERIOR
TOP VIEW



| | | | | | |
|----------|--|------------------------|-----------|-------------------------|----------------------|
| 1 | Válvula de extracción de muestras. | Sample valve | 6 | Conmutador. | Tap changer |
| 2 | Válvula de evacuación de aceite y conexión del equipo de filtrado. | Drain and filter valve | 7 | Nivel de aceite. | Oil Level indicator |
| 3 | Conector de tierra. | Ground connector | 8 | Deshidratador de aire. | Air dehydrator |
| 4 | Tapón de llenado. | Filling plug | 9 | Elementos de izaje. | Lifting Lugs |
| 5 | Vaina para termómetro. | Thermometer well | 10 | Ruedas bidireccionales. | Bidirectional wheels |

RELACION 13200 ±2 - 2,5% / 400 / 231 V

RATIO 13200 ±2 - 2,5% / 400 / 231 V

| Potencia (KVA) | Largo (mm) | Ancho (mm) | Alto (mm) | Trochas (mm) | Peso (Kg) | Pva (Watt) | Pcc (Watt) | Ucc (%) |
|----------------|-------------|------------|-------------|--------------|-------------|---------------------|------------------|---------|
| Power (KVA) | Lenght (mm) | Width (mm) | Height (mm) | Trail (mm) | Weight (Kg) | No Load Loss (Watt) | Load Loss (Watt) | Ucc (%) |
| 100 | 1400 | 920 | 1500 | 600 | 770 | 350 | 1750 | 4 |
| 125 | 1400 | 920 | 1500 | 600 | 810 | 420 | 2100 | 4 |
| 160 | 1400 | 1050 | 1550 | 600 | 920 | 500 | 2500 | 4 |
| 200 | 1450 | 1150 | 1600 | 600 | 1000 | 600 | 3000 | 4 |
| 250 | 1550 | 1150 | 1600 | 700 | 1200 | 700 | 3500 | 4 |
| 315 | 1550 | 1150 | 1750 | 700 | 1350 | 850 | 4250 | 4 |
| 400 | 1550 | 1230 | 1750 | 700 | 1500 | 1100 | 5500 | 4 |
| 500 | 1650 | 1300 | 1900 | 700 | 1750 | 1200 | 6000 | 4 |
| 630 | 1700 | 1300 | 1950 | 800 | 2050 | 1450 | 7250 | 4 |
| 800 | 1900 | 1410 | 1950 | 800 | 2400 | 1750 | 8750 | 5 |
| 1000 | 2000 | 1540 | 2000 | 800 | 2650 | 2000 | 10500 | 5 |
| 1250 | 2000 | 1800 | 2100 | 800 | 2700 | 2300 | 13800 | 5 |
| 1600 | 2200 | 1900 | 2150 | 1100 | 3600 | 2700 | 17000 | 6 |
| 2000 | 2200 | 2050 | 2400 | 1100 | 4300 | 3000 | 21500 | 6 |
| 2500 | 2250 | 2100 | 2450 | 1100 | 5000 | 3300 | 24800 | 6 |

RELACION 33000 ±2 - 2,5% / 400 / 231 V

RATIO 33000 ±2 - 2,5% / 400 / 231 V

| Potencia (KVA) | Largo (mm) | Ancho (mm) | Alto (mm) | Trochas (mm) | Peso (Kg) | Pva (Watt) | Pcc (Watt) | Ucc (%) |
|----------------|-------------|------------|-------------|--------------|-------------|---------------------|------------------|---------|
| Power (KVA) | Lenght (mm) | Width (mm) | Height (mm) | Trail (mm) | Weight (Kg) | No Load Loss (Watt) | Load Loss (Watt) | Ucc (%) |
| 100 | 1600 | 950 | 1850 | 600 | 1000 | 420 | 1900 | 4 |
| 125 | 1625 | 950 | 1875 | 600 | 1140 | 510 | 2550 | 4 |
| 160 | 1650 | 1150 | 1900 | 600 | 1250 | 600 | 2800 | 4 |
| 200 | 1700 | 1150 | 1900 | 600 | 1420 | 700 | 3250 | 4 |
| 250 | 1800 | 1200 | 2000 | 700 | 1620 | 850 | 4000 | 4 |
| 315 | 1800 | 1200 | 2050 | 700 | 1930 | 950 | 4800 | 4 |
| 400 | 1900 | 1300 | 2100 | 700 | 2130 | 1300 | 6300 | 4 |
| 500 | 1950 | 1350 | 2100 | 700 | 2300 | 1250 | 6400 | 4 |
| 630 | 2000 | 1450 | 2100 | 800 | 2640 | 1500 | 7600 | 4 |
| 800 | 2100 | 1650 | 2200 | 800 | 2920 | 1800 | 9800 | 5 |
| 1000 | 2150 | 1700 | 2200 | 800 | 3560 | 2200 | 11700 | 5 |
| 1250 | 2200 | 1850 | 2300 | 800 | 3900 | 2500 | 14200 | 6 |
| 1600 | 2275 | 1950 | 2400 | 1100 | 4550 | 2900 | 17800 | 6 |
| 2000 | 2280 | 2150 | 2400 | 1100 | 5500 | 3200 | 22000 | 6 |
| 2500 | 2300 | 2400 | 2450 | 1100 | 6150 | 3600 | 26000 | 6 |

ACCESORIOS

Opcionales

- Explosores a cuernos.
- Relé Buchholz.
- Termómetros con contactos.
- Nivel magnético con contactos.
- Relé de cuba.
- Relé de imagen térmica.
- Válvula de sobrepresión.
- Chimenea de alivio.
- Zapatas de conexión.
- Resistores de puesta a tierra.

ACCESSORIES

Optional

- Spark gap.
- Buchholz Relay
- Thermometer with contacts.
- Magnetic oil level gauge (w/contacts).
- Tank relay.
- Thermal replica relay.
- Pressure relief valve.
- Drain shaft.
- Connection spades.
- Ground resistances.